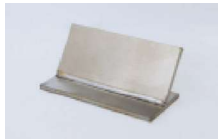
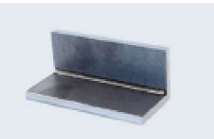




HW-D SERIES

Water-cooled Handheld Laser Welding Machine

● Sample



● Technical Parameter

Model	HW.D-1500W	HW.D-2000W	HW.D-3000W
Laser power	1.5kW	2kW	3kW
Mode of operation	Continuous / Modulation		
Welding seam requirements	≤0.5mm		
Welding speed	0-120mm/s		
Cooling method	Intelligent Dual-temperature and Dual-control Chiller		